



# CAREERS Newsletter



Welcome to the second edition of the James Brindley Careers Newsletter. We received some really positive feedback from young people, parents, carers and staff also offering some great ideas for the future.

Keep in touch via [careersteam@jamesbrindley.org.uk](mailto:careersteam@jamesbrindley.org.uk)

## CONTENT:

Welcome

BBC Bitesize: CAREERS

Aimhigher Unifest: Virtual University Careers Event

What do people earn? LMI Widget

Birmingham Careers Service: new useful leaflets for all ages

James Brindley Facebook



Explore careers by job sectors



Where could your favourite subject take you?

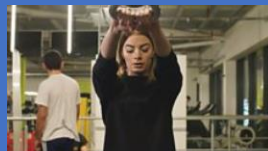


CVs

Here's a selection of topics BBC Bitesize has in its Careers section so why not take a look?



What skills do you need to work in a restaurant?



**How activities outside work can help put you a step ahead**

Why transferring skills from outside activities helps.



**Apprenticeships**

Fancy earning whilst you learn? Find out about apprenticeships – a practical way to gain your qualifications.

<https://www.bbc.co.uk/bitesize/career>

Most colleges in Birmingham are offering virtual open days and have videos on their websites that offer information about what their college offers. Check out individual college websites for details or ask the careers team for more information.

**Interested in finding out more about studying at University? UNIFEST is an opportunity to learn more about Higher Education and have an insight into what life is like as a 'Uni Student'. This will be 'UniFest's' first online event and they would love you to join them!**

Unifest is delivered in partnership with Aston University, Birmingham City University, Newman University, University College Birmingham, University of Birmingham and University of Worcester. So, in one event you'll get to experience what six of the West Midland's leading Universities have to offer. All ages are welcome to take part. For more information: <https://aimhigherwm.ac.uk/students/unifest/>



**UNIFEST ONLINE**  
THE VIRTUAL EVENT GUIDE  
29th June- 2nd July

**WHAT IS UNIFEST ABOUT?**  
Unifest is an opportunity to learn more about Higher Education and have an insight into what life is like as a 'Uni Student'. This will be our first online Unifest event and we'd love you to join us! Unifest is delivered in partnership with Aston University, Birmingham City University, Newman University, University College Birmingham, University of Birmingham and University of Worcester. So in one event you'll get to experience what six of the West Midland's leading Universities have to offer.

**WHAT WILL I NEED?**  
A laptop or computer works best! Or, you can download the Prezi Viewer App (it's free) on any phone/tablet! You may also need to grab a piece of paper and a pen so you can make notes.

**Virtual Unifest 2020**

**AIM HIGHER**



**UNIFEST ONLINE**  
THE VIRTUAL EVENT GUIDE  
29th June- 2nd July

**HOW DOES IT WORK?**  
This event will be hosted through Prezi, an online presentation app. A Virtual Host will introduce themselves and then narrate their way through the presentation. All you need to do is make sure your wifi is on and click through the arrows on the bottom of the screen. At the end, everyone who takes part will be entered into a prize draw!

**WHAT WILL THIS EVENT COVER?**  
We'll be running Unifest 2020 online from 29th June - 2nd July in three parts. You'll get an email from us by 10am each morning with a link to access the event and apart from the Live Q&A you can take part at a time that suits you!

**Virtual Unifest 2020**

**AIM HIGHER**



**UNIFEST ONLINE**  
THE VIRTUAL EVENT GUIDE  
29th June- 2nd July

**PART 1: MONDAY 29TH JUNE**

- Introduction to Unifest.
- What is Higher Education?
- Bitesize University Subject Masterclasses, you'll get to choose from: Sport, Law, Medicine, Design and Food and Nutrition.

**PART 2: WEDNESDAY 1ST JULY**

- Why think about this now?
- Applying to Higher Education: What You Need to Know.
- Student Life overview.
- Virtual campus tour.

**PART 3: THURSDAY 2ND JULY**

- Live Student Life Q&A with Student Ambassadors @ 4pm.

**KEEP IN TOUCH**  
Any questions? Get in touch! You can contact us via email [aimhigher@contacts.bham.ac.uk](mailto:aimhigher@contacts.bham.ac.uk), or send one of our friendly team a message on The Access Platform.

**CLICK HERE TO CHAT TO OUR FRIENDLY STAFF TODAY**  
<https://www.aimhigherwm.ac.uk/ask>

**Virtual Unifest 2020**

**AIM HIGHER**

**Labour Market Information LMI For All: interactive widget**  
You can use this to compare the national salaries of different jobs

Health professionals n.e.c.	
Weekly Pay <b>£710</b>	Annual Pay <b>£36,920</b>
Hours/Week <b>39h</b>	Hourly Pay <b>£18</b>
<b>Workforce Change</b> (projected)	
Growth <b>10.4%</b>	Replacement <b>54.5%</b>
The workforce is projected to grow by 10.4% over the period to 2027, creating <b>5,900</b> jobs. In the same period, 54.5% of the workforce is projected to retire, creating <b>31,100</b> job openings.	
You might find this job in Services to buildings Social work Real estate Membership organisations Retail trade	
<b>MORE INFO</b>	<b>CLEAR CARD</b>

IT engineers	
Weekly Pay <b>£720</b>	Annual Pay <b>£37,440</b>
Hours/Week <b>40h</b>	Hourly Pay <b>£18</b>
<b>Workforce Change</b> (projected)	
Contraction <b>-10.5%</b>	Replacement <b>49.2%</b>
The workforce is projected to contract by -10.5% over the period to 2027, losing <b>3,800</b> jobs. In the same period, 49.2% of the workforce is projected to retire, creating <b>17,900</b> job openings.	
You might find this job in Computer programming, etc Retail trade Education Financial services Auxiliary services	
<b>MORE INFO</b>	<b>CLEAR CARD</b>

**What is Labour Market information (LMI)?**

LMI describes the world of work. It gives us information about different careers, their entry routes, the availability of jobs, future jobs, earnings, skills and qualifications needed.



Birmingham Careers Service have produced some useful guides for young people of all ages, those with EHCP's and for parents and carers. They are definitely worth taking a look at: https://www.birminghamcareersservice.co.uk/publications/

IN YEAR 10? GET AHEAD WITH YOUR CAREER PLANNING FOR THE END OF YEAR 11! WHAT ARE YOUR POST-16 OPTIONS? You can: go to college, sixth form college or school sixth form start an apprenticeship or traineeship or training

How to write a winning CV

POST 16 OPTIONS: WHAT CAN I DO AT THE END OF YEAR 11? The Raising of the Participation Age means at the end of year 11 you will need to continue in education or training until at least your 18th birthday.

POST 18 OPTIONS: Your options at 18 are to: Remain in education (Higher Education) Enter the world of work (employment including apprenticeships) Take some time out (Gap Year) Volunteering/Internship

BUILDING YOUR SKILLS Employers look for people with good personal and employability skills. For example, communication, problem solving, and team working.

TELEPHONE INTERVIEW HINTS AND TIPS

LABOUR MARKET INFORMATION WHAT IS LMI? BIRMINGHAM CAREERS SERVICE guiding young people

LOCAL COLLEGE INFORMATION BIRMINGHAM CAREERS SERVICE guiding young people

TRAINING PROVIDER UPDATE



As an alternative to college you might want to consider a study programme, traineeship or apprenticeship; learning whilst getting experience in the world of work. The guide by Birmingham Careers Service called Training Provider Update is a good starting point but you also might want to take a look at the following websites

**Rate My Apprenticeship:** <https://www.ratemyapprenticeship.co.uk/>

**Get My First Job:** <https://www.getmyfirstjob.co.uk/>

**National Careers Service:** <https://nationalcareers.service.gov.uk/>

**Find A Traineeship:** <https://www.gov.uk/find-traineeship>

**Find An Apprenticeship:** <https://www.gov.uk/apply-apprenticeship>



**Please follow James Brindley Academy on Facebook**



The Careers team share posts on a daily basis including a number of the following organisations

